



Introduction to TrayDrive

TrayDrive is Copyright © 1996, 1997, **EBus**, All Rights Reserved

Synopsis

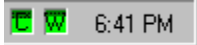
TrayDrive allows a Windows NT 4.x or Windows 95 user to add one or more hard disk graphs to the system tray. These graphs present the user with a quick yet accurate analysis of all accessible drives including local, LAN, CD-ROM, and removable drives.

Platforms

TrayDrive was written for Windows NT 4.0 and Windows 95.

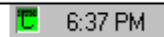
Major features

o Displays convenient task bar icon next to the task bar clock.  or



o Displays convenient tooltip over **TrayDrive** task bar icon.

Drive C Usage: 50%/977.6 Mb free



o **TrayDrive** can monitor one or more drives. (see [Drives](#))

o **TrayDrive** can provide feedback on drive status based on Percentage Used or MB Free. (see [Warnings](#))

o **TrayDrive** can monitor the drive(s) using several standard rates as well as **Custom**, with which the user can specify any rate from every second to over 48 hours. (see [Other Options](#))

Registration

TrayDrive is Shareware. You may use it for a trial period of **30** days. After **30** days, you must either register the product or discontinue usage of it. The registration fee is **US \$15**. For detailed information, please see the [Registration](#) page.



Installation/Uninstallation/Startup Folder

Installation

TrayDrive is distributed in 2 ways:

A. As a self-installing executable (.exe)

B. As a zip file containing the base files for **TrayDrive**

- o For the self-installing executable, simply double-click on the .exe and follow the on-line instructions.
- o For the zip file, unzip the file and place all the files in a new folder, perhaps called **TrayDrive**. To run the program, execute or double-click **TrayDrive.exe**.
- o For both installations, to schedule **TrayDrive** to always run at startup of Windows NT or 95, create a shortcut in your "Startup" folder.

Detailed shortcut information

Using the Explorer, right click and drag **TrayDrive.exe** and drop it in your **Startup** folder, choose **Create Shortcut Here** from the popup menu. For detailed help, please see the manual for NT or 95, refer to **Shortcuts**.

Uninstallation

If you installed using the self-installing .exe file

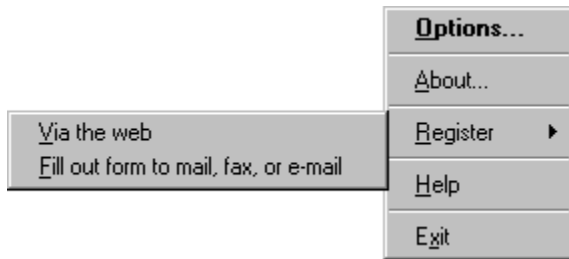
Go to Control Panel -> Add/Remove programs and select **TrayDrive** from the listing - **TrayDrive** will automatically uninstall.

If you manually unzipped the **TrayDrive** files

Delete the folder you created during the install, perhaps called **TrayDrive**. All the files and settings used by **TrayDrive** will be deleted.



Popup menu commands



The Popup menu is accessed by clicking with mouse button two on the **TrayDrive** task bar icon.

The Popup menu offers the following commands:

Options

About

Register via the web

Register via mail, fax, or e-mail

Help

Exit

Opens options for **TrayDrive**

Display about screen for **TrayDrive**

Register **TrayDrive** via the web

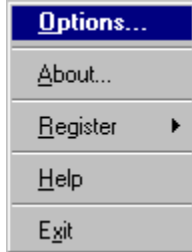
Register **TrayDrive** via the mail, fax, or e-mail

Display **TrayDrive** Help

Exits **TrayDrive**

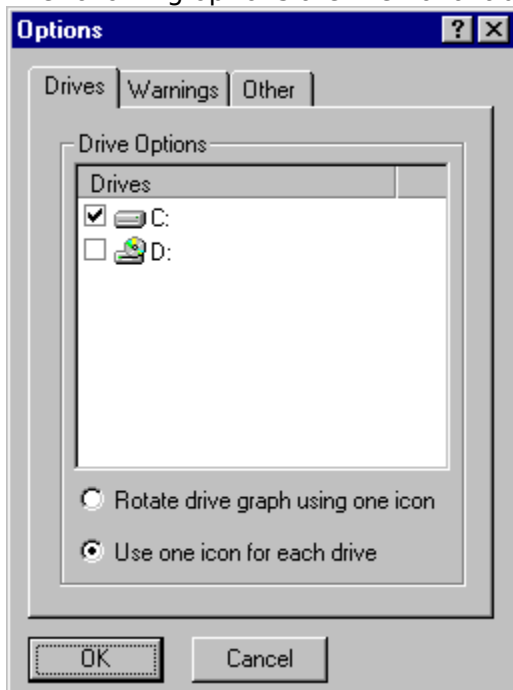


TrayDrive Options



Use this menu item to open the options screen for **TrayDrive**. Options can also be opened by double-clicking on the **TrayDrive** icon.

The following options are then available:



Drives

Modify options pertaining to drives available for monitor by **TrayDrive**

Warnings

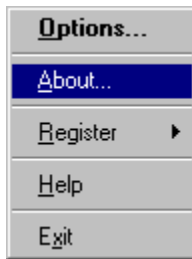
Modify options relating to warning levels available from **TrayDrive**

Other

Modify other options available with **TrayDrive**

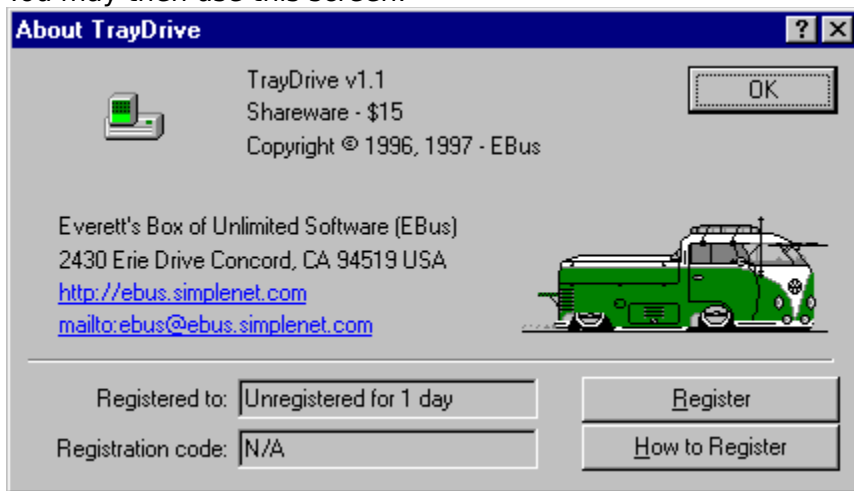


About TrayDrive



This Popup Menu item displays the **About** screen for **TrayDrive**.

You may then use this screen:



OK Button

? Symbol

Web Link

E-Mail Link

Registered To
Registration Code
Register Button

How To Register
Button

Press **OK** to exit the screen

Use the **?** or mouse button two to get context-sensitive help - Please explain

Use the textual web link (**<http://ebus.simplenet.com>**) to go to the **EBus** web page if you have a web browser installed.

Use the textual mail link (**<mailto:ebus@ebus.simplenet.com>**) to send mail to **EBus** about this or any product if you have a default Mail program registered on your system.

Displays who **TrayDrive** is registered to.

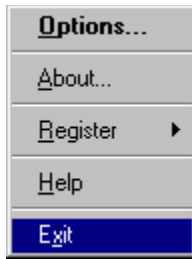
Displays the **TrayDrive** registration code

Press to open the Registration screen

Press for help on how to register **TrayDrive**



Exiting TrayDrive



Press **Exit** on the Popup Menu to exit **TrayDrive**



Quick Introduction to TrayDrive Usage

- o Click with mouse button 2 to access the Popup Menu
 - o Use Options to change the options for **TrayDrive**.
 - o Use About to view the About screen for TrayDrive and/or register TrayDrive.
 - o Use Register via the web to Register **TrayDrive** via the web.
 - o Use Register via mail, fax, or e-mail to Register **TrayDrive** via the mail, fax, or e-mail/
 - o Use Help to access the **TrayDrive** Help.
 - o Use Exit to exit **TrayDrive**.

- o Double-click the **TrayDrive** icon to access the Options.

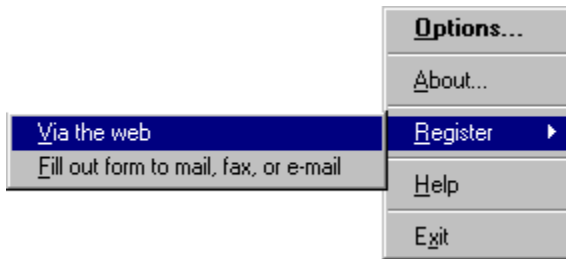


Known Issues

- o If **TrayDrive** is used to monitor Network drives, there may be a short delay while the Options screen loads to query the drives for needed information.
- o **TrayDrive** can be used in several places to start a web browser (The About page, or Register via the web on the Popup Menu). This feature may not work with all browsers. If you encounter an error, please start your browser manually and enter the web page address noted on the **TrayDrive** warning message.
- o If you come across any other problems with **TrayDrive**, please do not hesitate to contact the author of **TrayDrive**. (see Contacting the Author)



Registering TrayDrive via the web



This menu item will open your web browser and browse to site <http://ebus.simplenet.com/registration.htm> for **TrayDrive** on-line registration.

Thank you for your support!

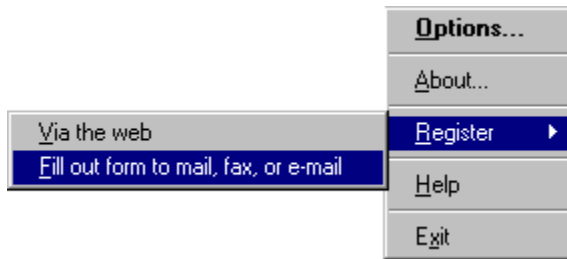


New features in this version of TrayDrive

- o Support for rotation of drives (see [Drives](#))
- o Display of drive letter on graph (see [Other Options](#))
- o **Custom** rate (see [Other Options](#))
- o Context-sensitive help (see [On-line Help](#))



Registering TrayDrive via mail, fax, or e-mail



This menu item will start the **Register** application to initiate registration for **TrayDrive** via mail, fax, or e-mail.

Registrations will be sent to Kagi, a registration service provider noted in the Register program. Thank you for your support!



Registration of TrayDrive

TrayDrive is a Shareware program and is provided at no charge to the user for evaluation. If you find this program useful and find that you are using **TrayDrive** after the **30** day trial period, you must pay a registration fee of **\$15** (US) to **EBus** or discontinue your usage of **TrayDrive**.

Why should I register?

- o Registration of **TrayDrive** will entitled you to all versions of **TrayDrive**, now and in the future
- o You will be supporting the Shareware concept and keeping Shareware prices low for everyone.
- o Although all feedback and/or comments are much appreciated, (see [Contacting the Author](#)) your input on what new features should be included in new releases of **TrayDrive** may carry greater weight.
- o Appreciation from the author of **TrayDrive**.

TrayDrive may be registered in many ways:

Using the **EBus** on-line registration:

Go to **<http://ebus.simplenet.com/registration.htm>** for **TrayDrive** on-line registration or select [Register via the web](#) from the [Popup Menu](#)

Using the **EBus** registration program:

Select [Register by mail, fax, or e-mail](#) from the [Popup Menu](#)

By sending a check or money order (US funds only) to:

EBus

2430 Erie Drive
Concord, CA 94519
USA

How to Register TrayDrive once you have your Registration Code

Once you have received a registration code from **EBus**, open the [About](#) screen and press **Register**.

You will then be presented with the following screen:

The screenshot shows a Windows-style dialog box titled "Register Tray Drive". It features a small computer icon on the left. There are two text input fields: "Name:" and "Registration code:". At the bottom, there are three buttons: "OK", "Cancel", and "How to Register".

OK Button

Press **OK** to validate your Registration Name and Code and

Cancel Button	save and exit the screen. Press Cancel to abandon registration and return to the <u>About</u> screen
? Symbol	Use the ? or mouse button two to get context-sensitive help - <u>Please explain</u>
Name	Enter the name you used to register TrayDrive . Note: You must use the same name for the registration code to work!
Registration Code How To Register Button	Enter the Registration code provided to you by <u>EBus</u> . Press for this help screen.



History of TrayDrive

v1.1 - March 25, 1997

- o Support for rotation of drives (see [Drives](#))
- o Display of drive letter on graph (see [Other Options](#))
- o **Custom** rate (see [Other Options](#))
- o Context-sensitive help (see [On-line Help](#))

v1.0 - October 1, 1996

- o First Release



Contacting the author of TrayDrive

The author of **TrayDrive** can be contacted in a variety of ways:

By Mail

EBus

2430 Erie Drive
Concord, CA 94519
USA

At our web page

<http://ebus.simplenet.com>

By E-Mail

ebus@ebus.simplenet.com

The **About** screen of the **TrayDrive** contains hotlinks to the Web Page and E-Mail.



License/Disclaimer/Copyright/Restrictions

TrayDrive is Copyright © 1996, 1997, **EBus**, All Rights Reserved

DISCLAIMER OF WARRANTY

THIS SOFTWARE IS PROVIDED "AS IS" AND WITHOUT WARRANTIES AS TO PERFORMANCE OF MERCHANTABILITY OR ANY OTHER WARRANTIES WHETHER EXPRESSED OR IMPLIED. BECAUSE OF THE VARIOUS HARDWARE AND SOFTWARE ENVIRONMENTS INTO WHICH THIS PROGRAM MAY BE PUT, NO WARRANTY OF FITNESS FOR A PARTICULAR PURPOSE IS OFFERED. THE USER MUST ASSUME THE ENTIRE RISK OF USING THE PROGRAM. IN NO EVENT WILL THE AUTHOR BE LIABLE TO YOU FOR ANY DAMAGES, INCLUDING INCIDENTAL OR CONSEQUENTIAL DAMAGES, ARISING OUT OF THE USE OF THE PROGRAM, EVEN IF ADVISED OF THE POSSIBILITY OF SUCH DAMAGES.

YOU ACKNOWLEDGE THAT YOU HAVE READ THIS LICENSE, UNDERSTAND IT AND AGREE TO BE BOUND BY ITS TERMS AS THE COMPLETE AND EXCLUSIVE STATEMENT OF THE AGREEMENT BETWEEN US, SUPERSEDING ANY PROPOSAL OR PRIOR AGREEMENT, ORAL OR WRITTEN, AND ANY OTHER COMMUNICATIONS BETWEEN US RELATING TO THE SUBJECT MATTER OF THIS LICENSE.

LICENSE

TrayDrive is a Shareware program and is provided at no charge to the user for evaluation. If you find this program useful and find that you are using **TrayDrive** after the 30 day trial period, you must pay a registration fee of US \$15 to **EBus** or discontinue your usage of **TrayDrive**. (see [Registration](#))

The registration fee will license one copy of **TrayDrive** for use by a single person who may use the software on one or more computers. The registration fee covers this and any future version of **TrayDrive**, and entitles the user to free technical support and free version upgrades by mail, e-mail, and web page.

Quantity discounts and Site licenses are available.

COPYRIGHT

All title and copyrights in and to the software product and any copies thereof are owned by the author.

RESTRICTIONS

You must maintain all copyright notices on all copies of the software product.

You may not reverse engineer, decompile, or disassemble the software product.

You may not rent or lease the software product.

You may permanently transfer all of your rights under this Agreement.

You must comply with all applicable laws regarding the use of the software product.

DISTRIBUTION

Regardless of your registration status, you're encouraged to distribute the UNREGISTERED version of **TrayDrive**. The REGISTERED version may NOT be distributed by any means.

You must include all files in the original distribution.

If **TrayDrive** is to be distributed on a read-only medium such as CD-ROM, then it is strongly recommended that the self-extracting .exe version with Setup routine is used, rather than the .zip file or individual uncompressed files. This version is available on the **EBus** web page at <http://ebus.simplenet.com>

This software cannot be resold or used in any profit-generating activities, including, but not limited to, distributing **TrayDrive** as part of commercial products, or in support of commercial services, without the author's expressed written permission.

TrayDrive is Copyright © 1996, 1997 **EBus**, All Rights Reserved



On-line Help



Use the above menu item from the Popup menu to access the help for **TrayDrive**.

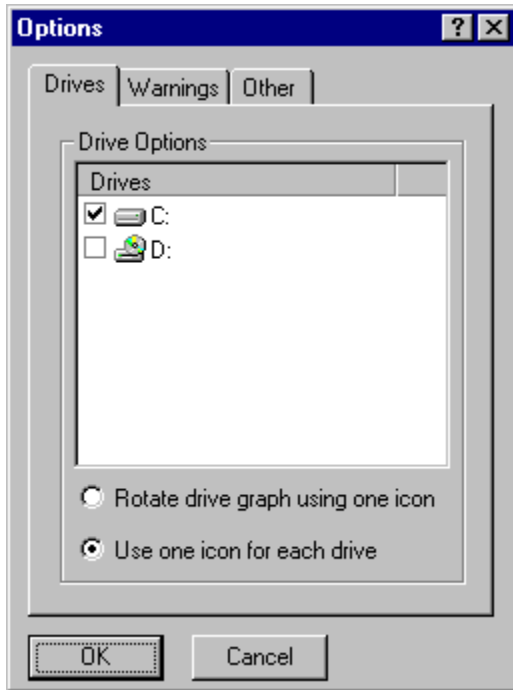
Context-sensitive help is also available

o By pressing the help button in the upper right of any dialog(?) Please explain further o By clicking with mouse button 2 on anything in a dialog, you will get a popup menu,

What's This? if that item has specific help associated with it. Select **What's this?** From the menu to receive specific help on that item.

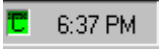


Drives



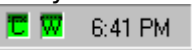
Drives Listing Rotate drive graph using one icon

Select the drives you wish **TrayDrive** to monitor.
Select this option to have **TrayDrive** place only one icon on the taskbar and rotate its graph through the drive(s) you have

selected in the **Drives Listing**. Example:  The rotate and update frequency of the graph is controlled by the **Graph Update Frequency** on the [Other page](#)

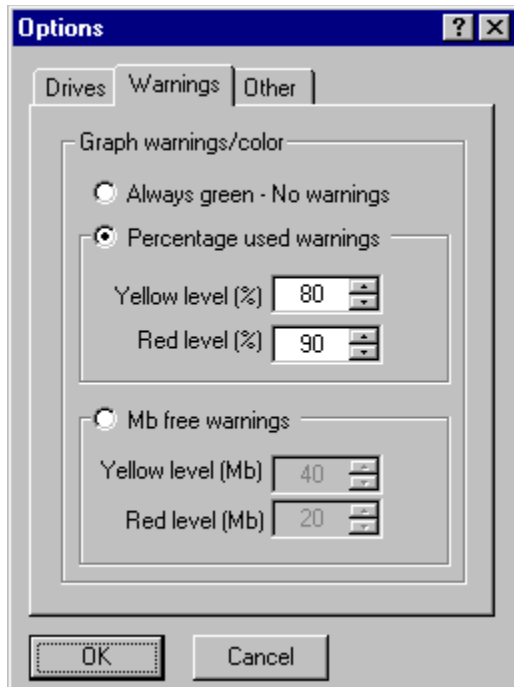
Use one icon for each drive

Select this option to have **TrayDrive** place an icon on your taskbar for each drive you have selected from the **Drives**

Listing. Example:  The update frequency of each graph is controlled by the **Graph Update Frequency** on the [Other page](#)



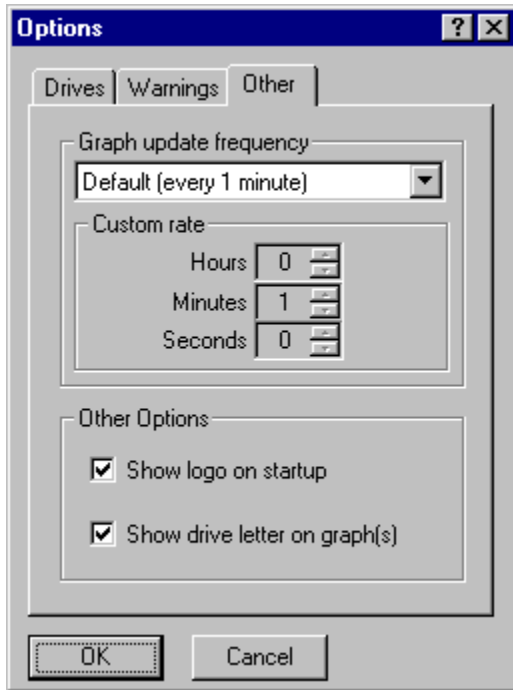
Warnings



- Always Green - no warnings** Select this option if you always want the **TrayDrive** graph(s) to be green; You want no warnings to be active.
- Percentage Used warnings** Select this option if you **TrayDrive** to change the color of its graph(s) based on the **Percentage Used** on a given drive.
- Yellow Level (%)** Use this field and/or spin control to set the **percentage** at which you wish the **TrayDrive** graph to turn **Yellow**, indicating a possibly problematic drive level.
- Red Level (%)** Use this field and/or spin control to set the **percentage** at which you wish the **TrayDrive** graph to turn **Red**, indicating a critical drive level.
- Mb Free warnings** Select this option if you **TrayDrive** to change the color of its graph(s) based on the **Mb Free** on a given drive.
- Yellow level (Mb)** Use this field and/or spin control to set the **Mb** at which you wish the **TrayDrive** graph to turn **Yellow**, indicating a possibly problematic drive level.
- Red Level (Mb)** Use this field and/or spin control to set the **Mb** at which you wish the **TrayDrive** graph to turn **Red**, indicating a critical drive level.



Other Options



Graph Update Frequency listing Custom Rate

Select one of preset Update Rates or select **Custom** to specify your own rate.

If you have selected **Custom** from the **Graph Update Frequency listing**, you may use the **Hours**, **Minutes**, and **Seconds** fields/spin controls to specify a custom rate from 1 second to 48 hours, 59 minutes, 59 seconds.

Show logo on startup Show drive letters on graph(s)

Check this option if you want to always see the **TrayDrive** splash screen during the startup of **TrayDrive**

Check this option if you want to see the drive letter that the current **TrayDrive** graph represent on the graph. Examples:

With: Without:

Press to Save and Exit the screen

Press to Cancel changes and Exit the screen

TrayDrive animation

EBus animation

Check this option to show the drive letter(s) on the **TrayDrive** task bar icon(s)

Check this box to show the **TrayDrive** splash screen on start up of the application

Use this listing to pick one of the default Refresh rates or to select **Custom** and specify your own rate using the spin controls below

When a custom Rate is specified from the Rates listing, use this box and/or spinner to specify the number of hours to wait between refreshes of the **TrayDrive** graph(s).

Use this box and/or spinner to specify the number of megabytes at which you wish the **TrayDrive** graph to turn red, indicating a critical drive space level.

Use this box and/or spinner to specify the number of megabytes at which you wish the **TrayDrive** graph to turn yellow, indicating a possibly problematic drive space level.

When a custom Rate is specified from the Rates listing, use this box and/or spinner to specify the number of minutes to wait between refreshes of the **TrayDrive** graph(s).

Use this box and/or spinner to specify the percentage level at which you wish the **TrayDrive** graph to turn red, indicating a critical drive space level.

Use this box and/or spinner to specify the percentage level at which you wish the **TrayDrive** graph to turn yellow, indicating a possible problematic drive space level.

When a custom Rate is specified from the Rates listing, use this box and/or spinner to specify the number of seconds to wait between refreshes of the **TrayDrive** graph(s).

Use this listing to specify the drive(s) you want **TrayDrive** to monitor

Check this selection if you want **TrayDrive** to change colors to indicate drive level status based on the number of Megabytes (Mb) free.

Check this selection if you want **TrayDrive** to change colors to indicate drive level status based on the percentage of drive space used.

Check this selection if you do not want **TrayDrive** to indicate visually (via green, yellow, and red colors) the drive level status of the drive(s) you have selected to be monitored.

Check this radio button to have **TrayDrive** use one icon to monitor all the drive(s) you have selected, rotating the drives based on the Rate you specified on the **Other** page of the **Options**.

Check this radio button to have **TrayDrive** use multiple icons to monitor all the drive(s) you have selected.

No specific help available

Company name

Press to send email to the author of **TrayDrive**

Company address

Program copyright

Program name

Program type and price

EBus logo

Use this to alternate between Options pages

Press to browse the **TrayDrive** web page

Who **TrayDrive** is registered to

The registration code for **TrayDrive**

Who **TrayDrive** is registered to

The registration code for **TrayDrive**

Press to open the **Registration** screen

Press to view help on **How to Register**

Enter the name you registered **TrayDrive** with here

Enter the registration code provided to you by **EBus** here

Enter the name you registered **TrayDrive** with here


Enter the registration code provided to you by **EBus** here


Everett's Box of Unlimited Software (EBus)
Everett Barnes
2430 Erie Drive
Concord, CA 94519
USA


Web Page: <http://ebus.simplenet.com>
E-Mail: ebus@ebus.simplenet.com



Home of TrayDrive and TrayCalendar

By pressing the help button in the upper right of the dialog()

the cursor will change to a  . You may then click on anything in the dialog to receive help on that specific topic.

By clicking with mouse button 2 on anything in the dialog, you will get a popup menu,  if that item has specific help associated with it. Select **What's this?** From the menu to receive specific help on that item.



No Help Available

No help is available for this area of the window.



No Help Available

No help is available for this message box.

